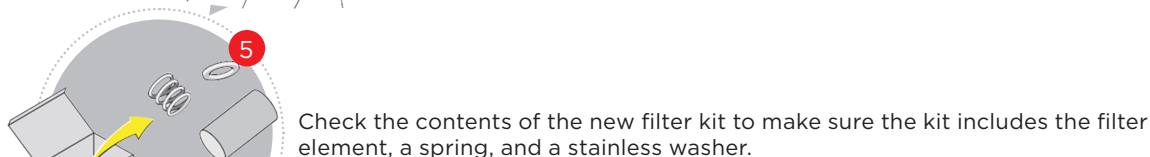
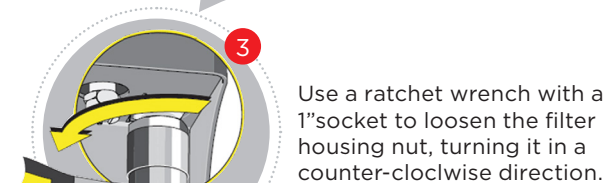
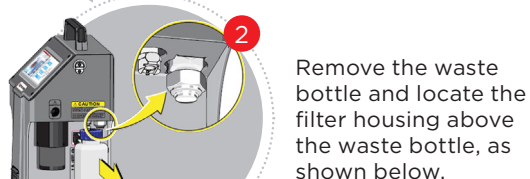
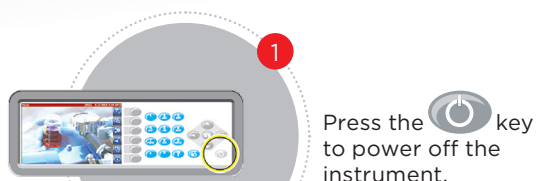


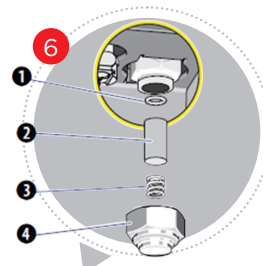
Replacing the hydraulic filter

Replace the hydraulic filter when a Low Pressure error is displayed when you attempt to run a sample.



Install the new parts in the installation sequence shown below. Install filter with the open end up.

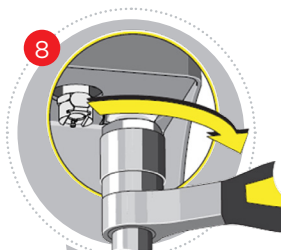
- 1. Stainless washer
- 2. Filter
- 3. Spring
- 4. Nut



7 Discard the old filter element, spring and stainless washer.

8 Retighten the filter housing nut firmly but do not overtighten as the O-ring may be damaged.

NOTE Do not replace O-ring with non Aflas O-ring.



Press the  key to power On the instrument.

